



ZHONGXI METAL CO.LTD

ABOUT US

- ZHONGXI are experienced and reliable steel stockholders that has a reputation of providing high quality steel products to our clients.

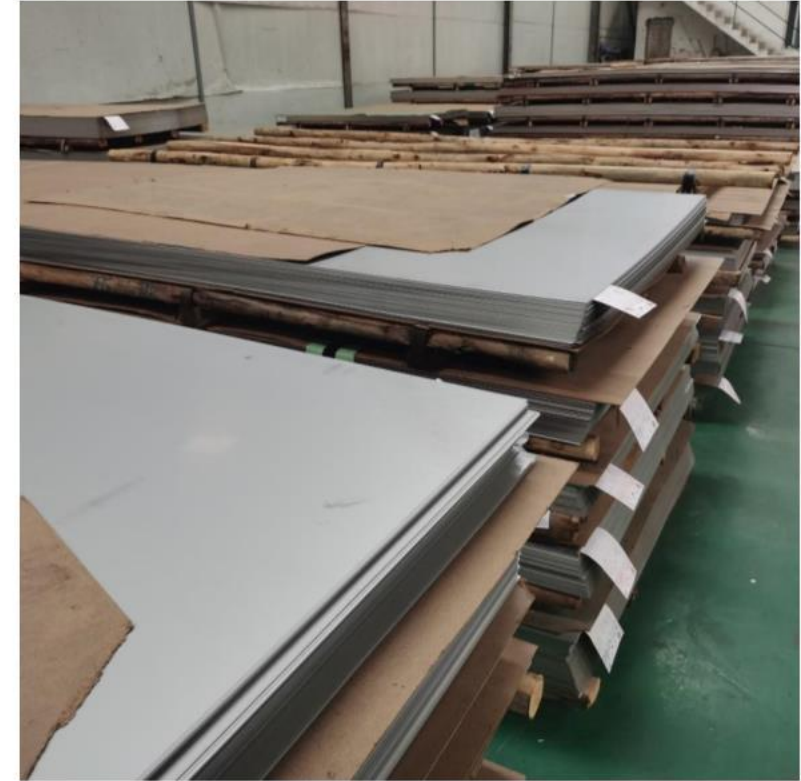
Since 2000 we have supplied high quality steel plates and profiles to customers throughout CHINA and worldwide. We have established ourselves as a first-choice supply partner of major manufacturing companies throughout the nation since then. With a quite large quenched and tempered size range, 1.5mm to 200mm thick. 99% of all enquiries can be covered from stock. Your costs are kept to a minimum with up to four different widths per thickness and the choice of full plates, cut to length, part plates or profiles.

Our products are manufactured to the highest quality standards and are very competitively priced. Although a high proportion of our customers are blue-chip market leaders seeking global procurement and supply solutions, we are also more than happy to cater for smaller quantity requirements and we maintain stocks in our distribution centers.

Historically, we have focused upon 'special' products for critical industries, such as automotive and defence, and in doing so we have established a strong network of some of the nation's best suppliers, but with a growing range of 'standard' products in our stocks, such as steel plates, seamless pipes, rebars and stainless steel sheets, we can now offer the more typical products quickly and effectively.

When dealing with abrasion resistant, high strength, weather resistant and work hardening steel plate, you cannot afford to take chances, it pays to trust a specialist. With ZHONGXI you never need to buy more than you need.

Staniless Steel Coil/Sheet



Specification

Thickness: 0.1-120mm (cold rolling:0.1-3mm;hot-rolling:3-120mm)

Width: Routine: 1000mm,1219mm,1530mm (Accept customer customization:600mm-2000mm)

Length: Routine: 2000mm,2438mm,3050mm,6000mm (Accept customer customization)

Stainless Steel Coil Leveling



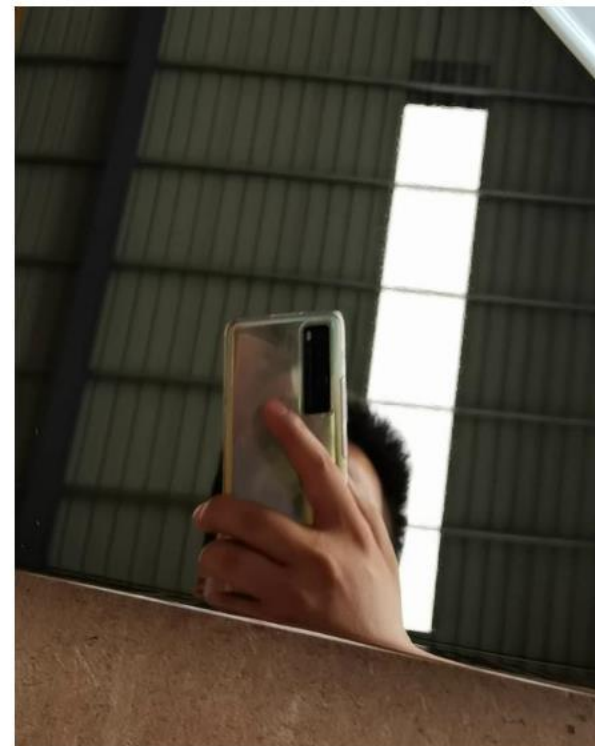
Stainless Steel Plate



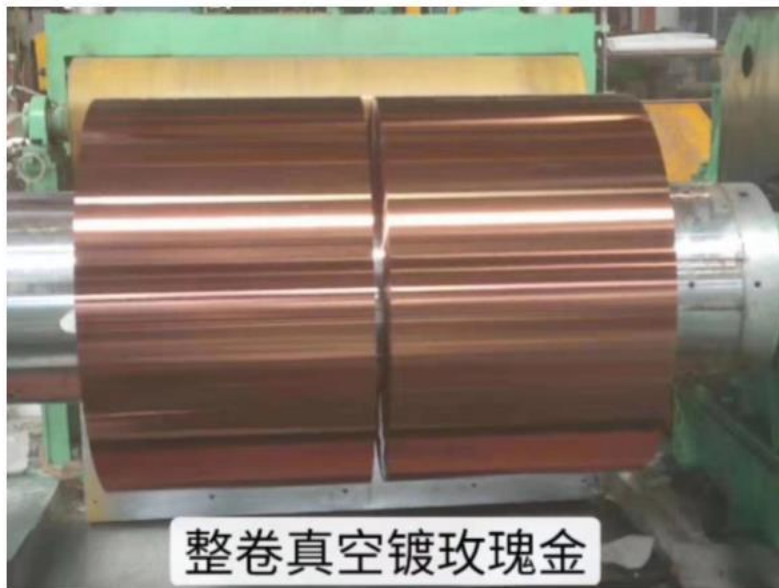
Wood Grain Transfer



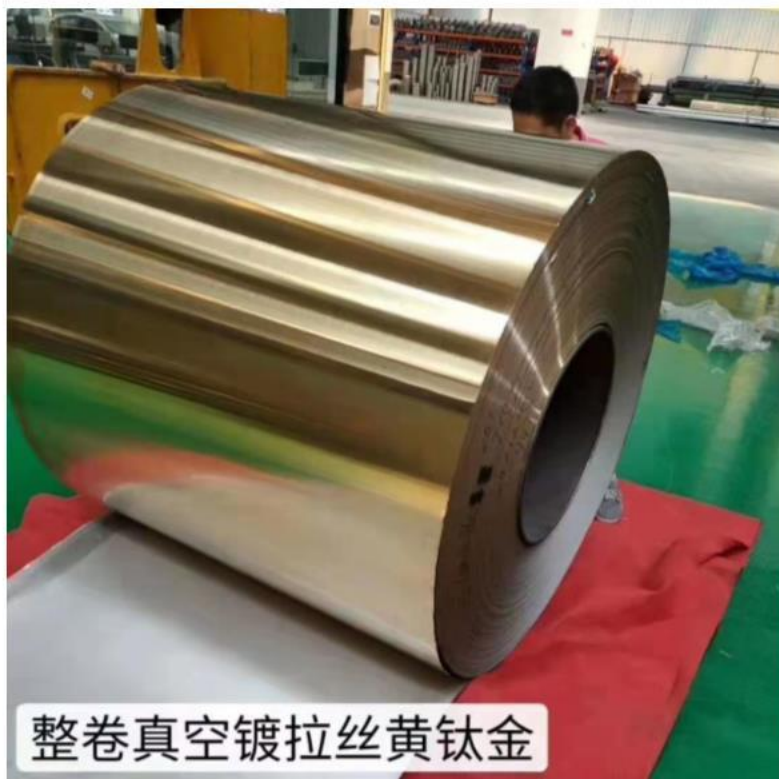
Stainless Steel Mirror Plate



Rose
Gold



Titanium
Gold



Color Plate
Production
Process

Stainless Steel Color Plate Display



Water Corrugated Plate Processing



Frosting



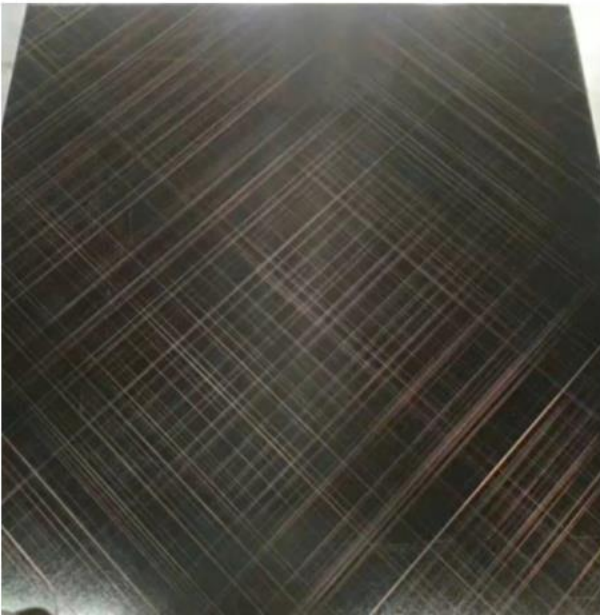
Mirror



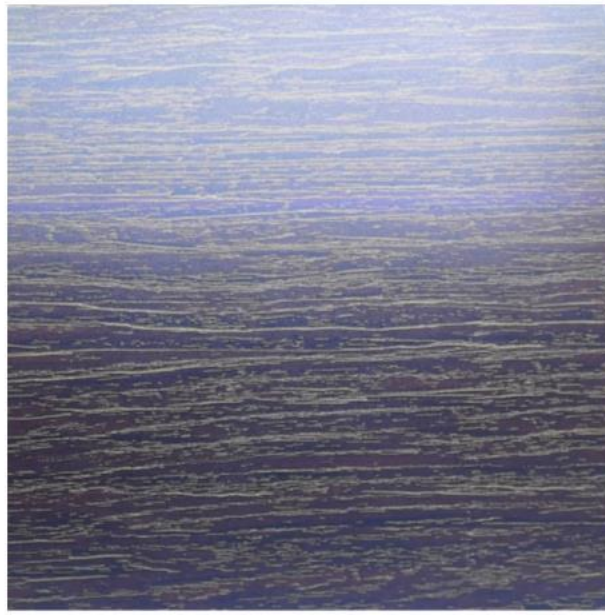
Etching



Wire drawing



Wood grain transfer



Sandblasting



Stainless Steel Composite Plate



Basic Parameters of Stainless Steel Composite Plate

Cladding material--304(S30408),304L(S30403),316L(S31603)

317L(S31703),321(S32168);

1Cr13(S410);

2205(S22053), 2507(S22073) ;

310S(S31008),254SMo(S31254),904L(N08904);

N08926(1.4529),N08825(INCONEL825),N06625(INCONEL625);

TA1,TA2工业纯钛.....

Base course thickness: 5.0~49.5mm;

Cladding thickness: 0.5~5.0mm;

Total thickness: 5~50.0mm;

Delivery width: ≤2650mm;

Delivery length: ≤13000mm;

Lead time: 20days

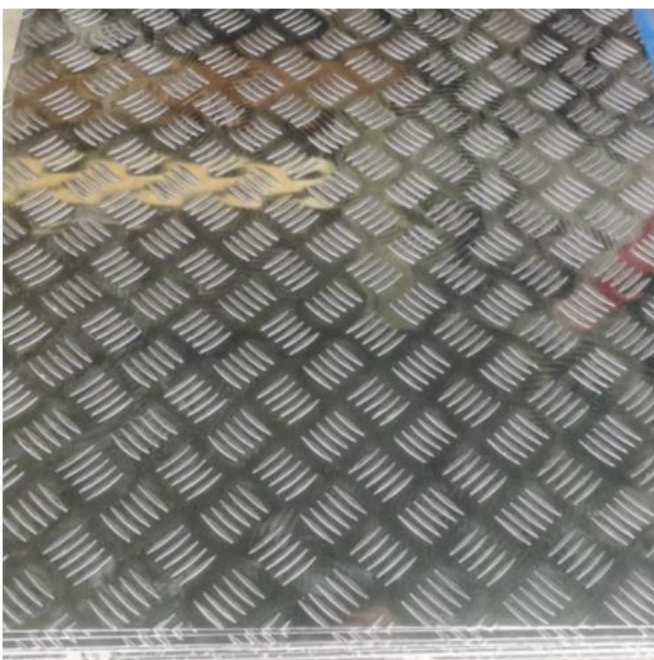
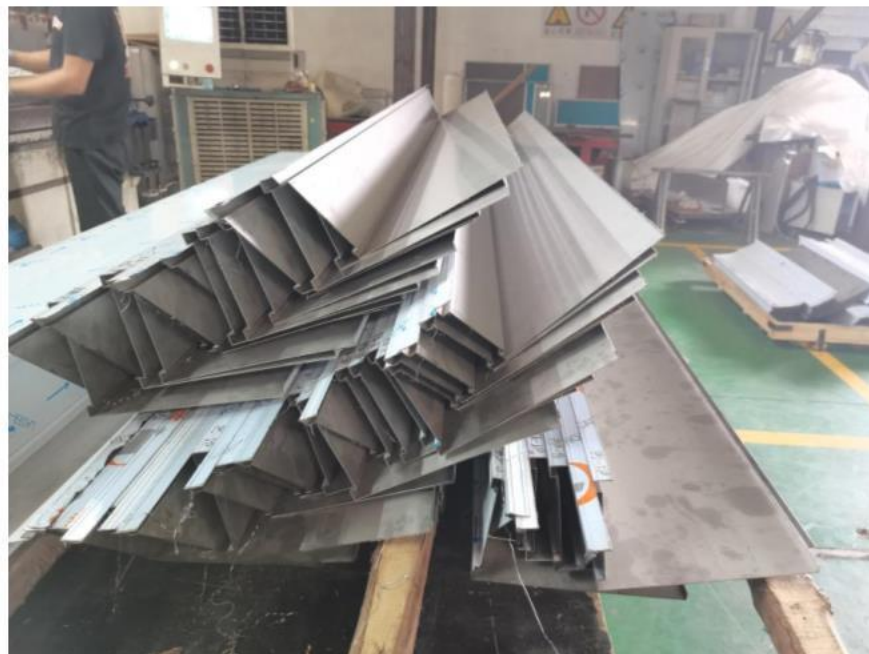
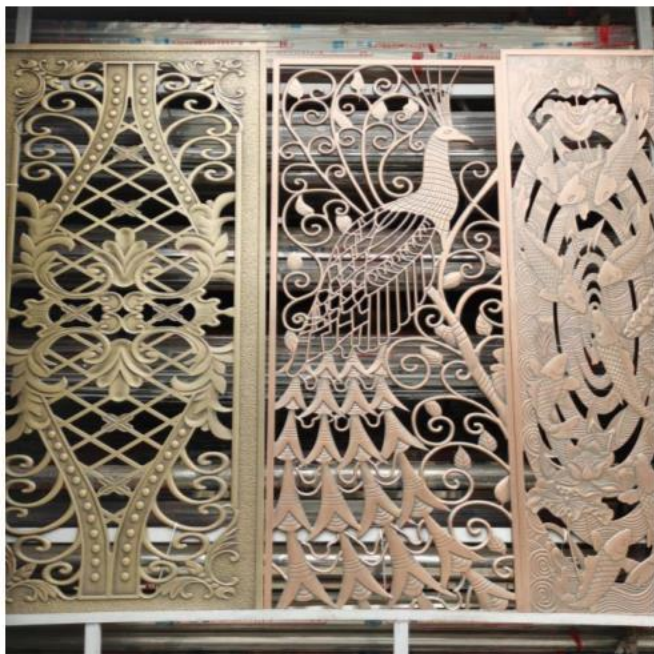
Other varieties and specifications can be formulated through consultation with buyers.

Base material--Q235B,Q345B,Q245R,Q345R;

16MnDR,Q345D,Q370R;

T10,GCr15;

X52,X60,X70.....



Grooving Equipment



Bending Equipment



Plate Laser Processing



Rounding Equipments



Tank



Capping

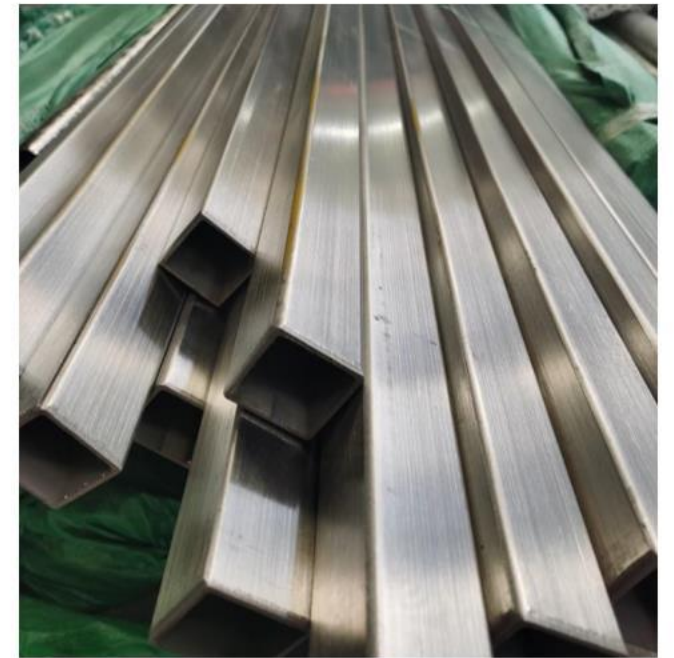
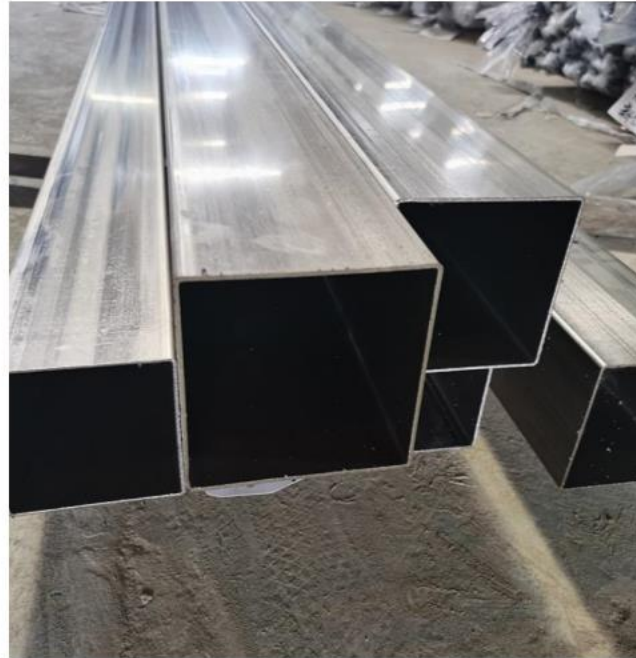


Decorative Tube

Specification: Diameter 6-430mm
Thickness: 0.2-6mm
Accept Customization



Square Tube/Rectangular Tube



Fabrication of Decorative Pipe

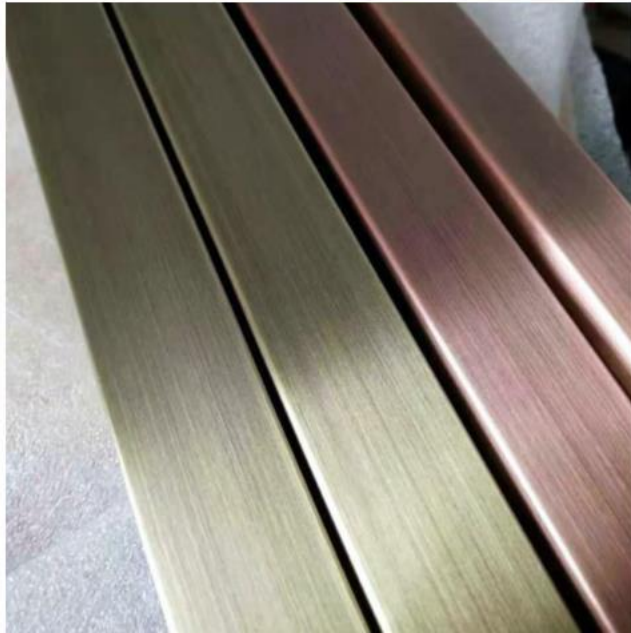
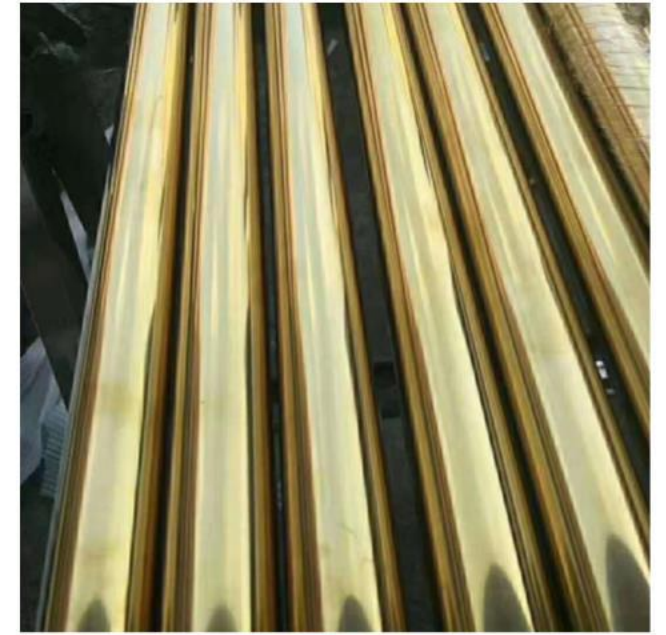
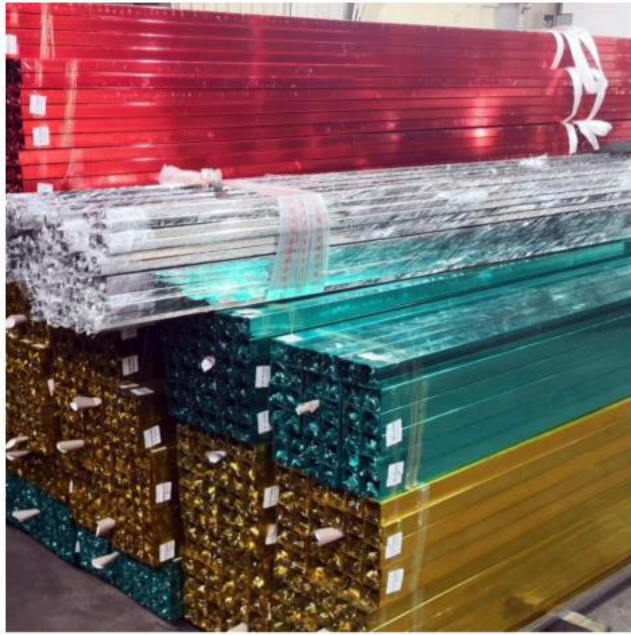


Round Pipe Production



Square Tube Production

Color Stainless Steel Tube



Stainless Steel Seamless Pipe

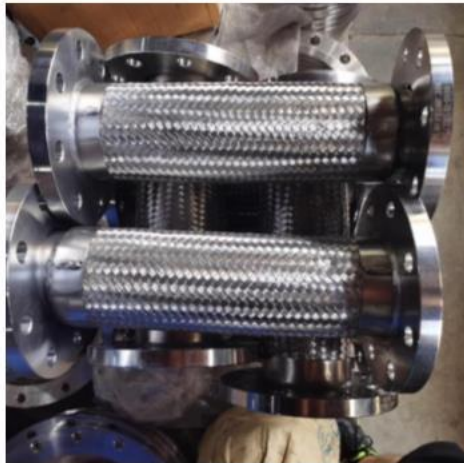
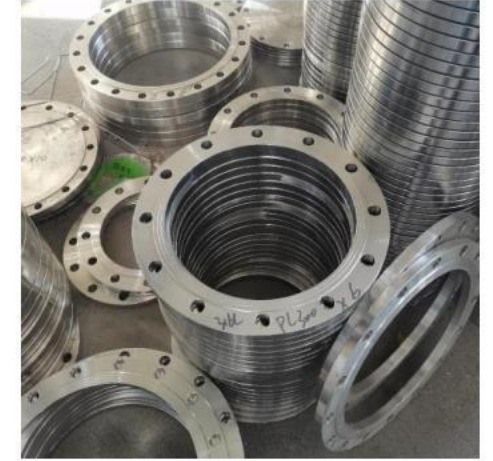


Stainless Steel Seamless Pipe

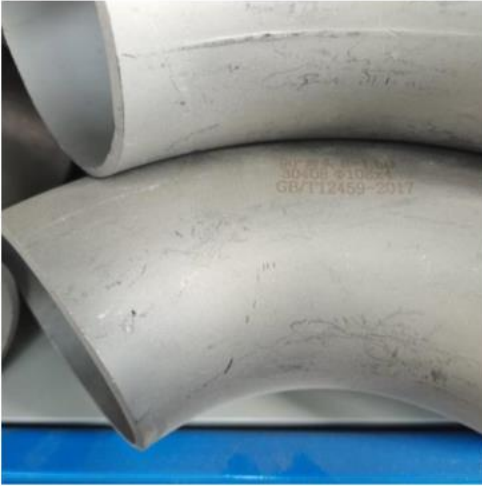
Specification: Diameter 6-430mm
Thickness: 1-100mm
Accept customization



Fittings-Flange/Reducer/Clamp



Fittings-Elbow/TEE/Coupling



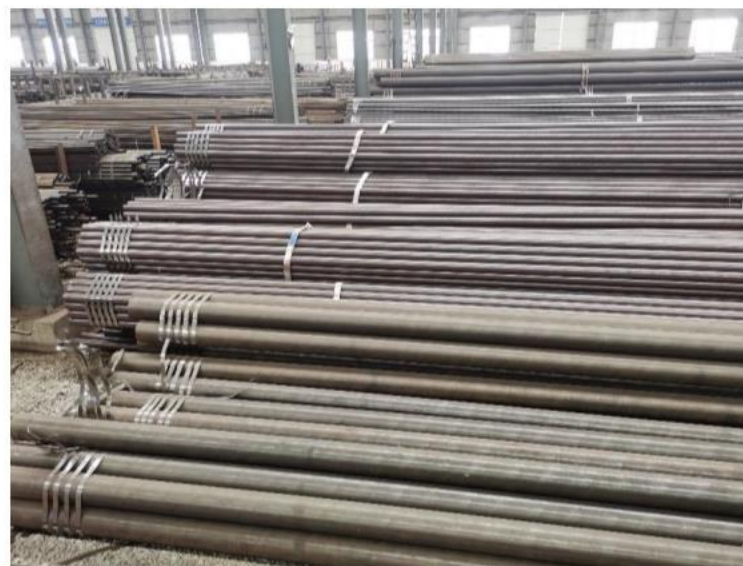
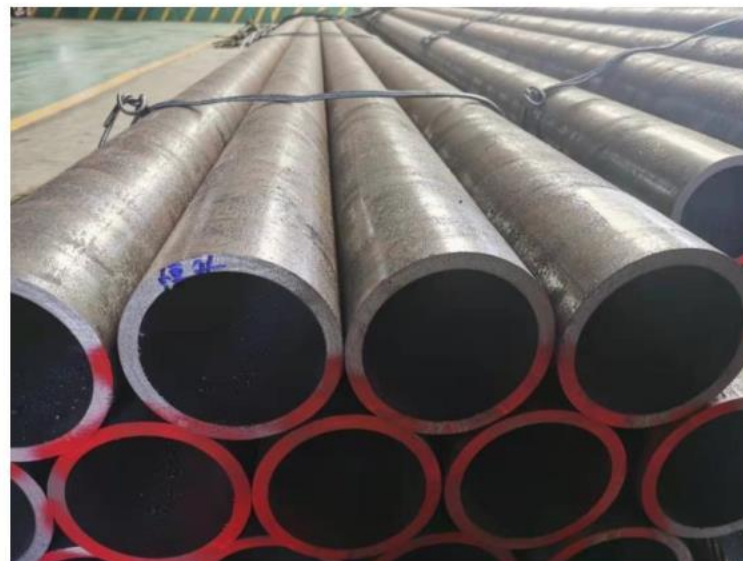
Fittings-Valves



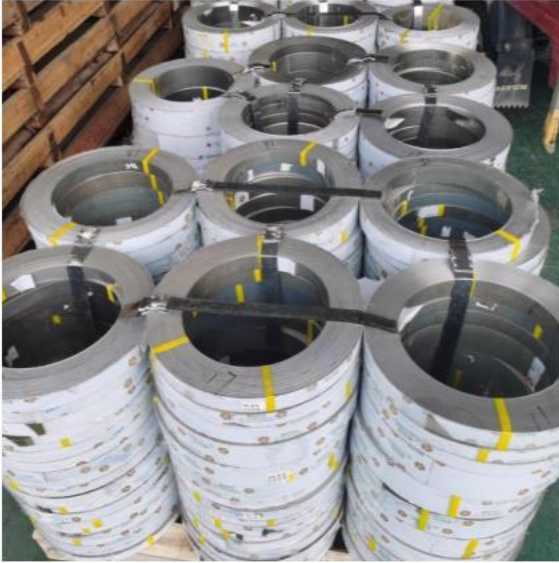
Seamless Pipe Production



Carbon Steel Seamless Pipe



Stainless Steel Strip



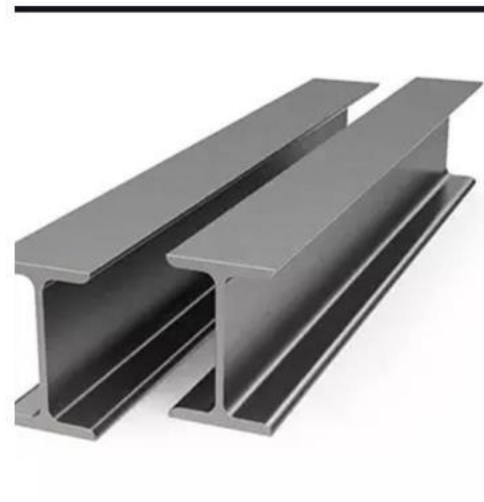
Section Bar



Round/Mild steel



Channel



I-section steel



Flat steel



Angle steel

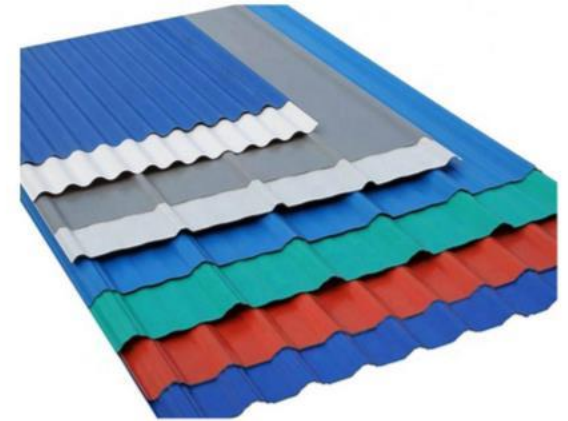
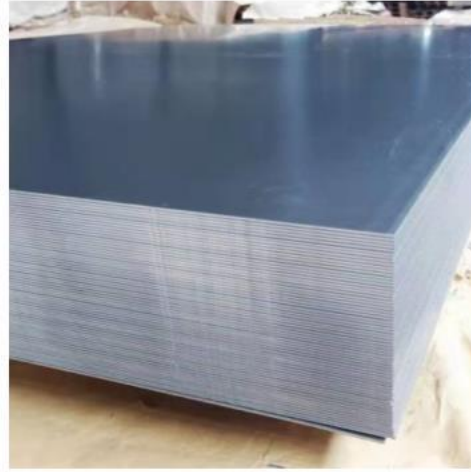


C-section steel



H-section steel

Galvanized Sheet/Color Coated Plate/Galvanized Corrugated Board/Aluminized Zinc Plate/Aluminum Zinc Magnesium Plate



HRB355/HRB400E/HRB500E/Q195/Q235/HPB Rebar



奥氏体不
锈钢

S35350	1Cr17Mn6Ni5N	12Cr17Mn6Ni5N		201		SUS201	X12CrMnNiN17-7-5
S35450	1Cr18Mn8Ni5N	12Cr18Mn9Ni5N		202	S20200	SUS202	X12CrMnNiN18-9-5
S35550	1Cr18Mn10Ni5-Mo3N						
S30110	1Cr17Ni7	12Cr17Ni7		301	S30100	SUS301	X10CrNi18-8
S30210	1Cr18Ni9			302	S30200	SUS302	302S31
S30314	Y1Cr18Ni9			303	S30300	SUS303	X8CrNiS18-9
S30315	Y1Cr18Ni9Se			303Se	S30323	SUS303Se	303S42
S30408	0Cr18Ni9	06Cr19Ni10	QN1803	304	S30400	SUS304	X5CrNi18-10
S30403	00Cr19Ni10	022Cr19Ni10	QN1804L	304L	S30403	SUS304L	X2CrNi19-11
S30458	0Cr19Ni9N	06Cr19Ni10N		304N	S30451	SUS304N1	
S30478	0Cr19Ni10NbN	06Cr19Ni9NbN		XM-21	S30452	SUS304N2	
S30453	00r18Ni10N	022Cr19Ni10N		304LN	S30453	SUS304LN	X2CrNiN18-10
S30510	1Cr18Ni12	10Cr18Ni12		305	S30500	SUS305	X4CrNi18-12
S30908	0Cr23Ni13	06Cr23Ni13		309S	S30908	SUS309S	
S31008	0Cr25Ni20	06Cr25Ni20		310S	S31008	SUS310S	310S31
S31608	0Cr17Ni12Mo2	06Cr17Ni12Mo2		316	S31600	SUS316	X5CrNiMo17-12-2
S31660	1Cr18Ni12Mo2Ti						
S31668	0Cr18Ni12Mo2Ti	06Cr17Ni12Mo2Ti		316Ti	S31635	SUS316Ti	X6CrNiMoTi17-12-2
S31603	00Cr17Ni14Mo2	022Cr17Ni12Mo2	QN1906Mo	316L	S31603	SUS316L	X2CrNiMo18-14-3
S31683	00Cr17Ni14Mo2Cu2					SUS316J1L	
S31658	0Cr17Ni12Mo2N	06Cr17Ni12Mo2N		316N	S31651	SUS316N	X5CrNiMo17-12-2
S31653	00Cr17Ni13Mo2N	06Cr17Ni13Mo2N		316LN	S31653	SUS316LN	X2CrNiMoN17-11-3德、X2CrNiMoN17-11-3法英
S31688	0Cr18Ni12Mo2Cu2	06Cr18Ni12Mo2Cu2				SUS316J1	
S31780	0Cr19Ni13Mo3	06Cr19Ni13Mo3		317	S31700	SUS317	316S33
S31703	00Cr19Ni13Mo3	022Cr19Ni13Mo3		317L、317LMN	S31703	SUS317L	X2CrNiMo18-15-4
S31760	1Cr18Ni12Mo3Ti			316Ti	S31635	SUS316Ti	X6CrNiMoTi17-12-2
S31768	0Cr18Ni12Mo3Ti			316Ti	S31635	SUS316Ti	X6CrNiMoTi17-12-2
S31848	0Cr18Ni16Mo5					SUS317J1	
S32160	1Cr18Ni9Ti			321	S32100	SUS321	X6CrNiTi18-10
S32168	0Cr18Ni10Ti	06Cr18Ni11Ti		321	S32100	SUS321	X6CrNiTi18-10
S34778	0Cr18Ni11Nb	06Cr18Ni11Nb		347	S34700	SUS347	X6CrNiNb18-10
S34888	0Cr18Ni9Cu3					SUS XM7	X3CrNiCu18-9-4
S38108	0Cr18Ni13Si					SUS XM15J1	
S38010	1Cr18Ni9Si3			302B	S30215	SUS302B	
S35020	2Cr13Ni4Mn9						
S30120	1Cr17Ni8					SUS301J1	
30404	0Cr19Ni11			308	30800		
S32161	1Cr18Ni11Ti			321H	S32109	SUS321	X6CrNiTi18-10

铁素体双相不锈钢	S21803	00Cr18Ni5Mo3Si2	022Cr19Ni5Mo3Si2N					
	S22453	00Cr24Ni6Mo3N					SUS329J4L	
	2205	00Cr22Ni5Mo3N		QN2109Mo		S31803		X2CrNiMoN2253
	S22160	1Cr21Ni5Ti						
铁素体型不锈钢	S11348	0Cr13Al	06Cr13Al		405	S40500	SUS405	X6CrAl13
			022Cr11Ti		409	S40900	SUH409	
	S11203	00Cr12	022Cr12				SUS410L	
	S11710	1Cr17	10Cr17	QN1701	430	S43000	SUS430	X6Cr17
	S11714	Y1Cr17					SUS430F	X6CrMoSi7
	S11790	1Cr17Mo	10Cr17Mo		434	S43400	SUS434	X6CrMo17-1
	S13093	00C30Mo2					SUS447J1	
		022Cr18NbTi					SUS441	
	S12793	00Cr27Mo			XM-27	S44627	SUSXM27	
	S11703	00Cr17					SUS430LX	
	S11510	1Cr15			429	S42900	SUS429	
	S11793	00Cr17Mo					SUS436L	
			022Cr18NbTi			S43904		
	S11893	00Cr18Mo2	019Cr19Mo2NbTi			S44400	SUS444	
	S12560	1Cr25Ti						
马氏体型不锈钢	S40310	1Cr12	12Cr12		403	S40300	SUS403	X12Cr13
	S41010	1Cr13	12Cr13		410	S41000	SUS410	X12Cr3
	S41008	0Cr13			410S	S41008	SUS410S	X6Cr13
	S41514	Y1Cr13				S41600	SUS416	X12CrSi3
	S45710	1Cr13Mo					SUS410J1	
	S42020	2Cr13	20Cr13		420	S42000	SUS420J1	X20Cr13
	S42030	3Cr13	30Cr13		420	S42000	SUS420J2	X30Cr13
	S42034	Y3Cr13			420F	S42020	SUS420F	
	S45830	3Cr13Mo						
	S42040	4Cr13						X39Cr13
	S43110	1Cr17Ni2			431	S43100	SUS431	X17CrNi16-2
	S44070	7Cr17	68Cr17		440A	S44002	SUS440A	
	S44080	8Cr17			440B	S44003	SUS440B	
	S44090	9Cr18/11Cr17			440C	S44004	SUS440C	
	S44094	Y11Cr17			440F	S44020	SUS440F	
	S45990	9Cr18Mo			440C	S44004	SUS440C	X105CrMo17
	S46990	9Cr18MoV						X90CrMoV18
	S44030	3Cr16					SUS429J1	
沉淀硬化	S51748	0Cr17Ni4Cu4Nb		17-4PH	630	S17400	SUS630	X5CrNiCuNb16-4
	S51770	0Cr17Ni7Al		17-7PH	631	S17700	SUS631	X7CrNiAl17-7

A large, solid blue oval shape is centered on a white background. Inside the oval, the text "Thank you for visiting our products." is written in a white, serif font, centered horizontally and vertically.

Thank you for visiting our
products.

FAQ:

1. Can you visit the company?

First of all, you are welcome to visit our company on any day. We cordially invite you to visit our offices as well as the factory.

2. How can you trust us?

We believe that business is all about gaining the trust of the customers. Therefore, we can guarantee that your investment will remain 100% safe. Moreover, we never disclose our client's information to others.

3. Do the factory satisfy the big order?

Of course, we can accomplish the big order. We have more than 1000 employees in the factory.

4. What about the quality?

We maintain the best quality up to date. At present, we have 55 top researchers in the R&D section in our company. They are working hard to provide the best quality of the goods to the clients.

5. What about MOQ?

We are taking the order at least 1 ton. And for the customization, at least 2 tons.

6. What about the delivery time?

Typically, we send our goods within 7-10 days after making the order. We negotiate about the time limit for the big order with our customers. We must give priority to your decision.

7. What kind of payment method does your company support?

T/T, 100% L/C at sight, Cash, Western Union, and MoneyGram are all accepted. If you have other payment methods, please let us know. We will consider that method if possible.

8. Can you take samples?

Of course, we can send the samples. We normally send the samples free of cost.